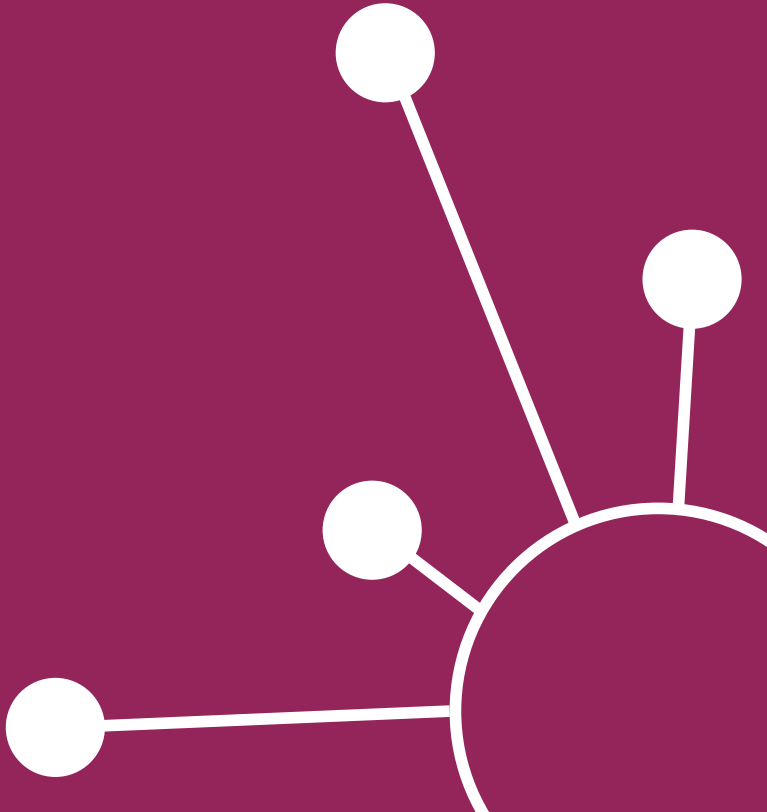




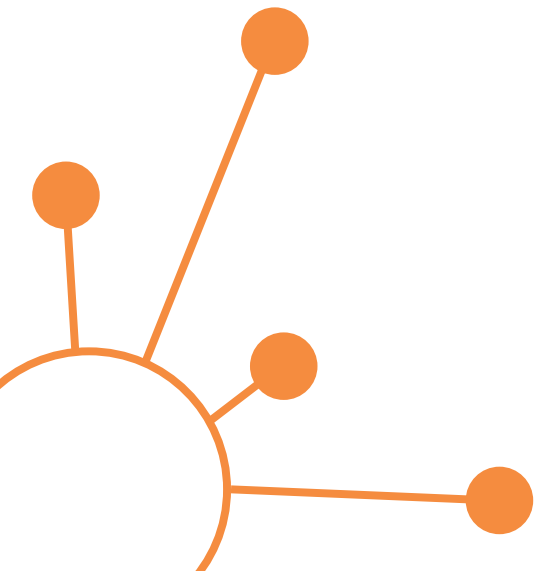
# FOREWORD

I am delighted to introduce these Awards to recognise and celebrate excellence in



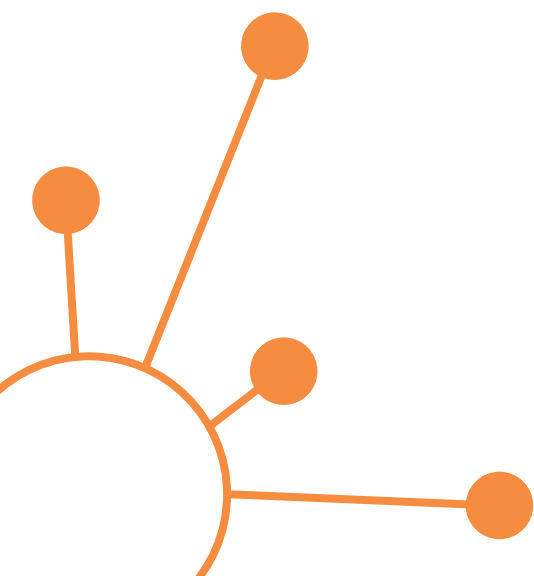


# ED HAWKINS SPIRALLING UPWARDS



# TERESA MURJAS

## WAR CHILD: MEDITATING ON AN ARCHIVE





# DEEPA SENAPATHI

## BEES, PLEASE

INFORM



# HELEN BILTON

## EDUCATIONAL OUTSIDERS

INFLUENCE

ö  
p  
i  
ç  
ë  
ä

é  
p  
p  
p  
yÜ  
A

A

p

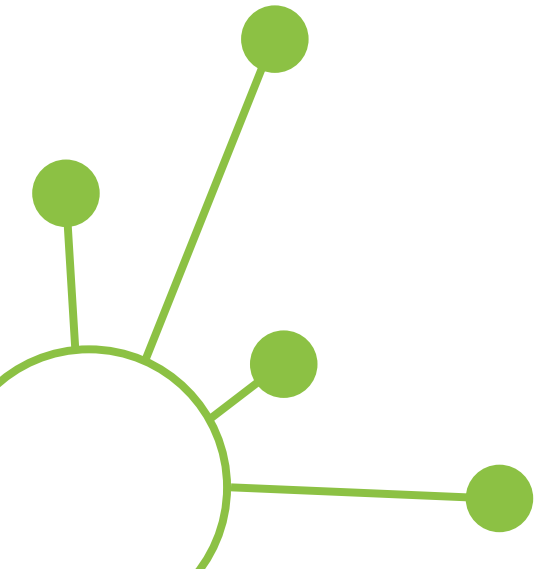
A

a

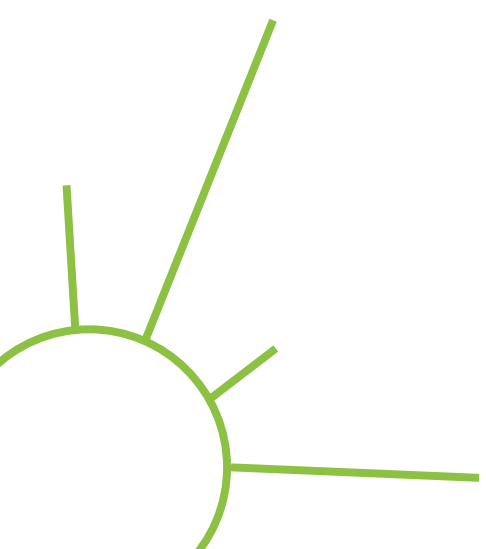
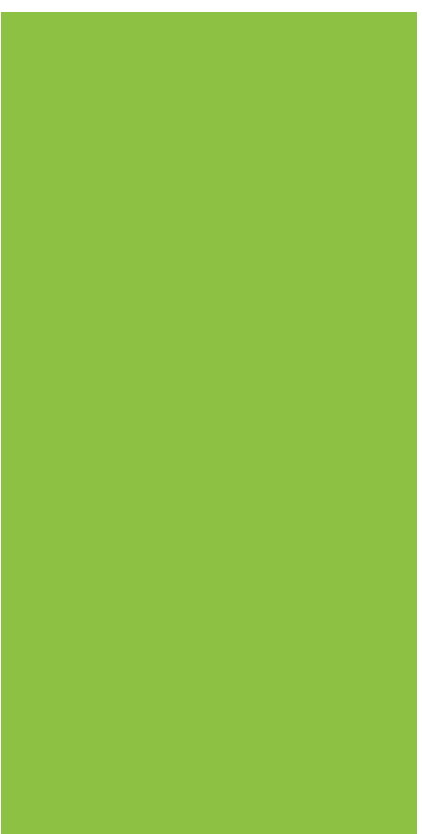
A

a

A







# ANNA HORWOOD

## INCREASING THE VISIBILITY OF CHILDREN'S EYE HEALTH

Professor Anna Horwood, of the School of

Optometry, has a direct impact on the clinical

practice of optometrists and the lives of children

with vision problems. Her research is focused on

improving the visual health of children and young

people, and the impact of vision problems on their

learning and development. She is currently leading

the development of a new course in paediatric

optometry, which will be the first of its kind in the

UK. This course will provide optometrists with the

skills and knowledge needed to provide the best

possible care for children and young people with

vision problems. Her research is also focused on

improving the visual health of children and young

people, and the impact of vision problems on their

learning and development. She is currently leading

the development of a new course in paediatric

optometry, which will be the first of its kind in the

UK. This course will provide optometrists with the

skills and knowledge needed to provide the best

possible care for children and young people with

vision problems. Her research is also focused on

improving the visual health of children and young

people, and the impact of vision problems on their

learning and development. She is currently leading

the development of a new course in paediatric

optometry, which will be the first of its kind in the

UK. This course will provide optometrists with the

skills and knowledge needed to provide the best

possible care for children and young people with

vision problems. Her research is also focused on

improving the visual health of children and young

people, and the impact of vision problems on their

learning and development. She is currently leading

the development of a new course in paediatric

optometry, which will be the first of its kind in the

UK. This course will provide optometrists with the

skills and knowledge needed to provide the best

possible care for children and young people with

vision problems. Her research is also focused on

improving the visual health of children and young

people, and the impact of vision problems on their

learning and development. She is currently leading

the development of a new course in paediatric

optometry, which will be the first of its kind in the

UK. This course will provide optometrists with the

skills and knowledge needed to provide the best

possible care for children and young people with

vision problems. Her research is also focused on

improving the visual health of children and young

people, and the impact of vision problems on their

learning and development. She is currently leading

the development of a new course in paediatric

optometry, which will be the first of its kind in the

UK. This course will provide optometrists with the

skills and knowledge needed to provide the best

possible care for children and young people with

vision problems. Her research is also focused on

improving the visual health of children and young

people, and the impact of vision problems on their

learning and development. She is currently leading

the development of a new course in paediatric





# SIMON POTTS

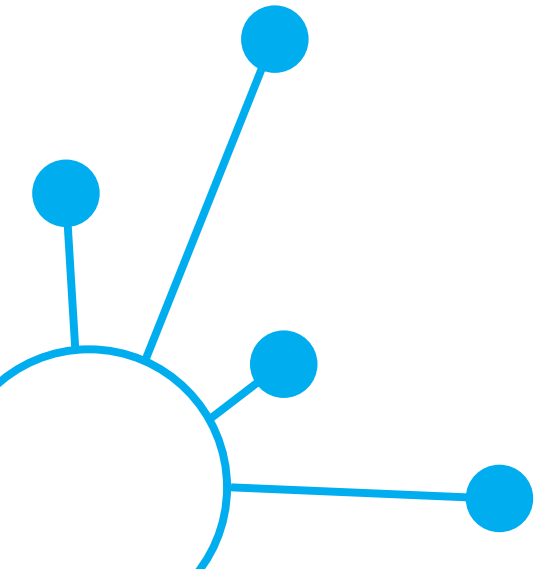
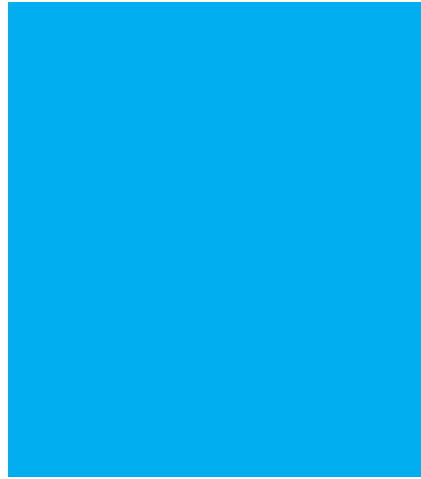
INFLUENCE



# KATE ALLEN

## A FEEL FOR HERITAGE

INSPIRE



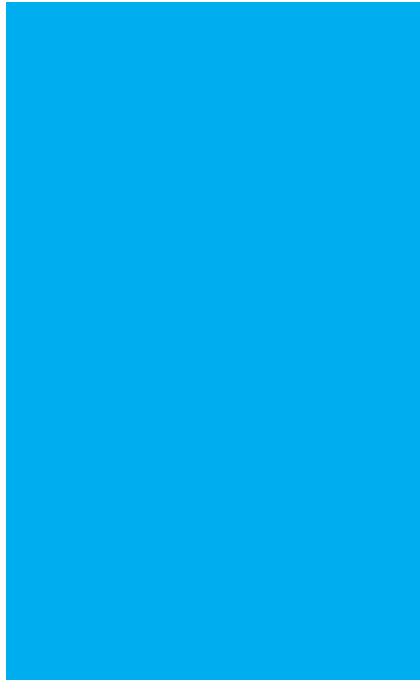
# MARK DALLAS

## BRIGHT SPARKS

ñ  
p  
y y ¼  
p  
y p  
p p ç ö p ç p p ú  
p p é p  
Bright Sparks project, Dallas is helping to

a ö p p > p p  
p p y p a p  
p >B p ú A A

A ú é Ú A









# MICHAEL GARRATT

# MAKING NATURE COUNTS

# COUNT

Design and testing of a national pollinator  
and pollination monitoring framework

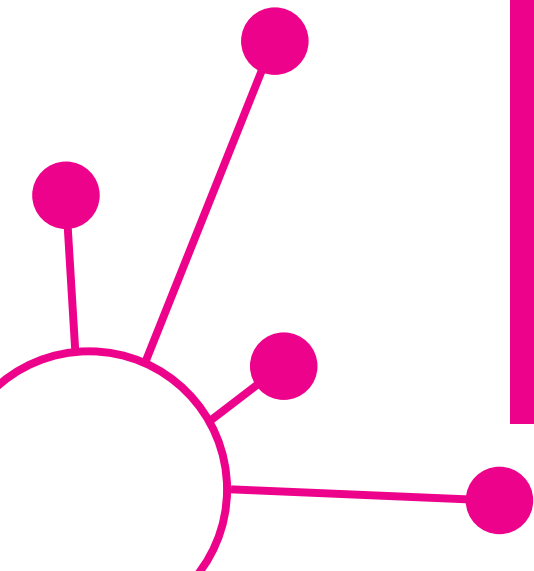
i p i

a i i ž

i ò' q

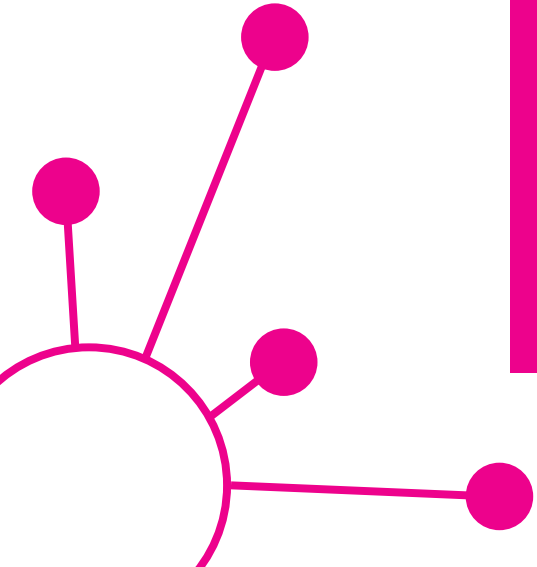
INVOLVE

i p z

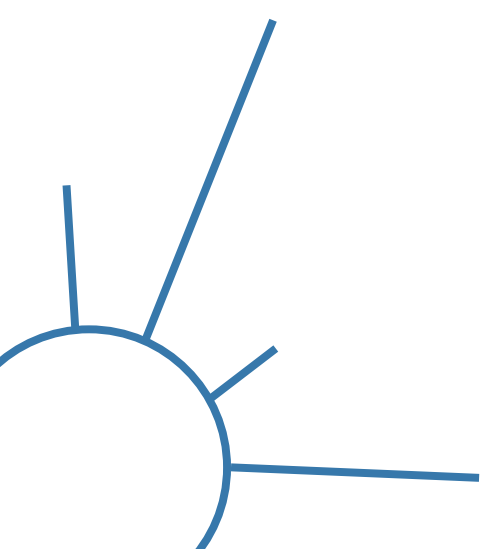
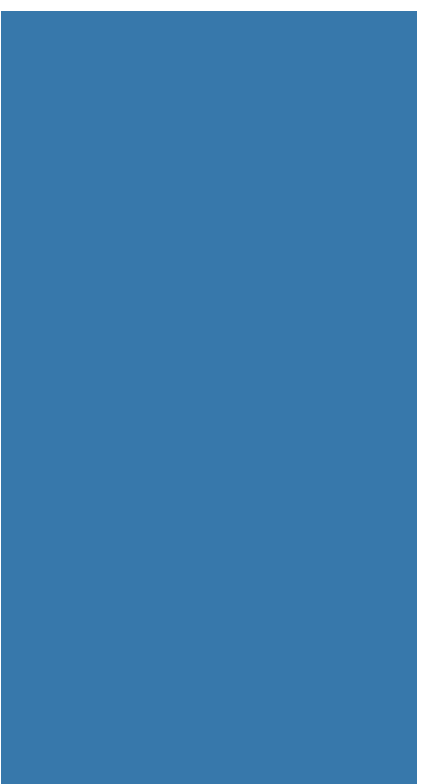


# SALLY LLOYD-EVANS WORKING BETTER WITH WHITLEY

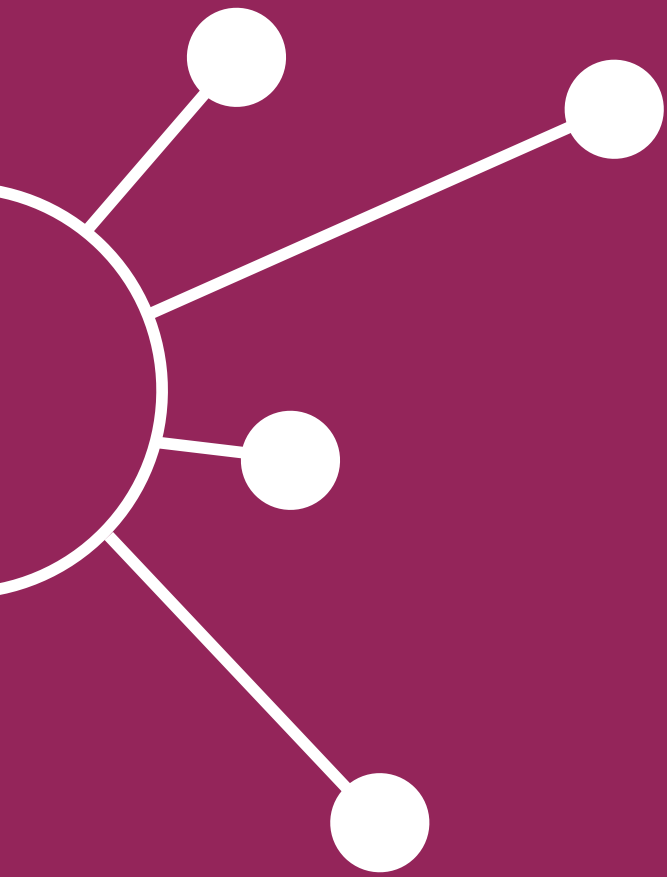
i = <ü ö ö p  
" < ä i pñp pi é  
< p p  
p p p p p y  
<@ p p p e p  
¼y y i =  
p p ç öb i »  
è p p p  
p p p  
ö p = <? ç i »è p  
p p p p  
p p ü ö p  
= p p p p p  
empower residents to take ownership of the  
p p  
p y p = <@  
p p p p  
p p p p  
p y y  
ö p ä












**THE UNIVERSITY OF  
READING IS COMMITTED TO  
SUPPORTING OUR RESEARCHERS  
TO ENGAGE WITH PUBLIC AND  
PROFESSIONAL AUDIENCES,  
TO ENSURE THAT OUR  
RESEARCH CONTRIBUTES  
TO GLOBAL DEBATES AND  
BENEFITS THE ECONOMIC**



 For more information, please contact:

**Research Communications  
and Engagement Team**